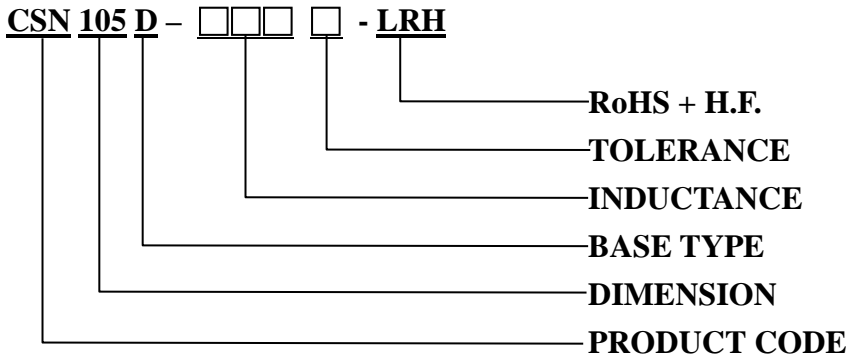


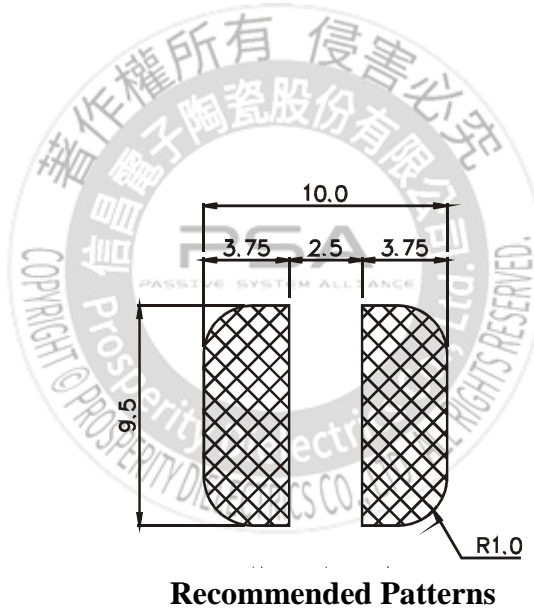
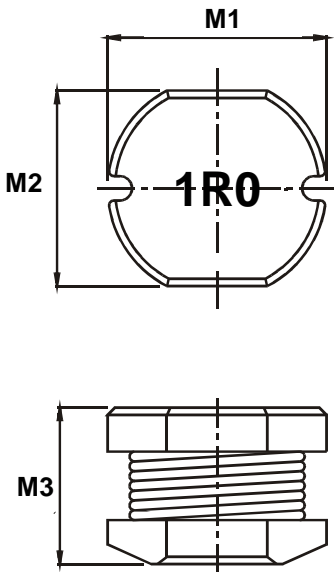
SPECIFICATION FOR APPROVAL

※This is a RoHS and REACH compliant product whose related documents are available on request.
 ※Graphic is only for dimensionally application.

1. PART NUMBER IDENTIFICATION



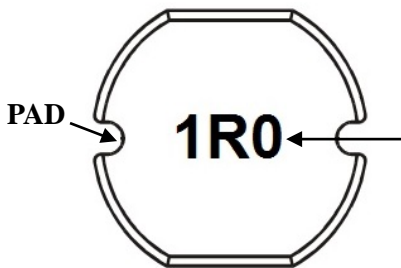
2. MECHANICAL DIMENSION



UNIT: mm

	DIM.	TOL.
M1	10.0	±0.4
M2	9.0	±0.4
M3	5.4	±0.4

3. MARKING



Marking Direction: PAD is on the left and right, the font is facing left and centered.

Example: 1R0 Stands for Marking → 1.0μH

SPECIFICATION FOR APPROVAL

4. ELECTRICAL SPECIFICATION

Part number	Marking	Inductance (μ H)	Test Frequency (KHz)	DC Resistance (Ω) MAX.	Rated Current (A)
CSN105D-100□-LRH	100	10	100	0.06	2.60
CSN105D-120□-LRH	120	12	100	0.07	2.45
CSN105D-150□-LRH	150	15	100	0.08	2.27
CSN105D-180□-LRH	180	18	100	0.09	2.15
CSN105D-220□-LRH	220	22	100	0.10	1.95
CSN105D-270□-LRH	270	27	100	0.11	1.76
CSN105D-330□-LRH	330	33	100	0.12	1.50
CSN105D-390□-LRH	390	39	100	0.14	1.37
CSN105D-470□-LRH	470	47	100	0.17	1.28
CSN105D-560□-LRH	560	56	100	0.19	1.17
CSN105D-680□-LRH	680	68	100	0.22	1.11
CSN105D-820□-LRH	820	820	100	0.25	1.00
CSN105D-101□-LRH	101	100	10	0.35	0.97
CSN105D-121□-LRH	121	120	10	0.40	0.89
CSN105D-151□-LRH	151	150	10	0.47	0.78
CSN105D-181□-LRH	181	180	10	0.63	0.72
CSN105D-221□-LRH	221	220	10	0.73	0.66
CSN105D-271□-LRH	271	270	10	0.97	0.57
CSN105D-331□-LRH	331	330	10	1.15	0.52
CSN105D-391□-LRH	391	390	10	1.30	0.48
CSN105D-471□-LRH	471	470	10	1.48	0.42
CSN105D-561□-LRH	561	560	10	1.90	0.33
CSN105D-681□-LRH	681	680	10	2.25	0.28
CSN105D-821□-LRH	821	820	10	2.55	0.24
CSN105D-122□-LRH	122	1200	100	3.50	0.20

NOTE:

1. □Tolerance: M:±20%, L:±15%, K:±10%.
2. Operating temperature range: -25°C to +125°C.
3. Storage temperature range:-25°C to +85°C.
4. Inductance measured using the HP4284A LCR meter, CHROMA1320 & 3302.
5. DCR measured using the 16502 milli-ohm meter.
6. Inductance drops no more than 10% of initial value at rated current, temperature rises $\Delta t < 40^{\circ}\text{C}$.
7. MSL: Level 1