

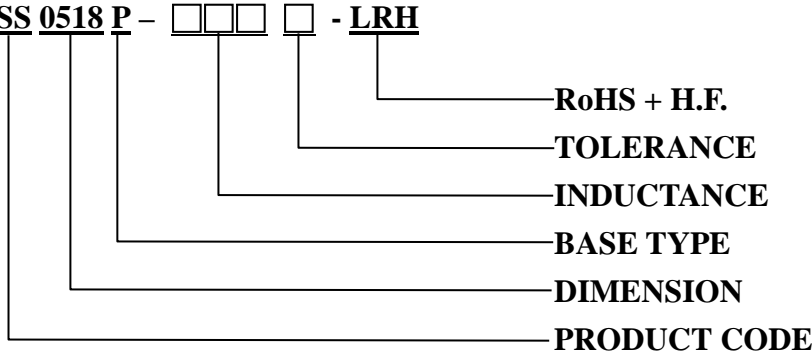
# SPECIFICATION FOR APPROVAL

This is a RoHS and REACH compliant product whose related documents are available on request.

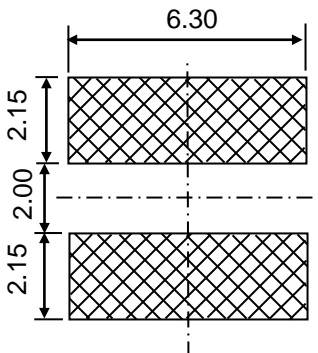
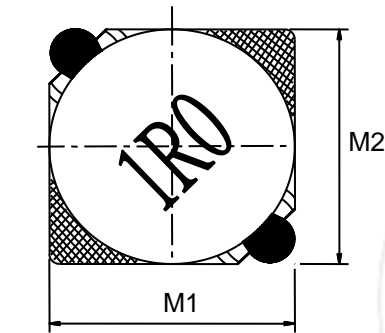
※Graphic is only for dimensionally application.

## 1. PART NUMBER IDENTIFICATION

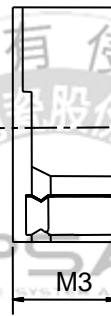
**CSS 0518 P - □□□ □ - LRH**



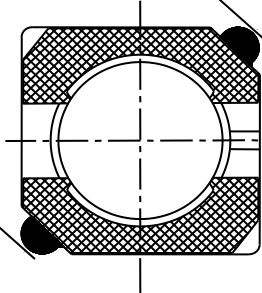
## 2. MECHANICAL DIMENSION



Recommended Patterns



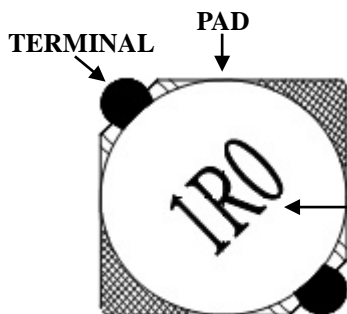
8.2Max.



UNIT: mm

	DIM.	TOL.
M1	5.7	±0.3
M2	5.7	±0.3
M3	2.0	MAX.

## 3. MARKING



Marking Direction: PAD is on the upper and lower sides, the font faces the upper left terminal and is centered.

Example: 1R0 Stands for Marking → 1.0μH

# SPECIFICATION FOR APPROVAL

## 4. ELECTRICAL SPECIFICATION

Part number	Marking	Inductance (uH)	Test Frequency (KHz)	DC Resistance (mΩ) MAX.	Rated Current (A)
CSS0518P-4R1N-LRH	4R1	4.1	10	57	1.95
CSS0518P-5R4N-LRH	5R4	5.4	10	76	1.60
CSS0518P-6R2N-LRH	6R2	6.2	10	96	1.40
CSS0518P-8R9N-LRH	8R9	8.9	10	116	1.25
CSS0518P-100N-LRH	100	10	10	124	1.20
CSS0518P-120N-LRH	120	12	10	153	1.10
CSS0518P-150N-LRH	150	15	10	196	0.97
CSS0518P-180N-LRH	180	18	10	210	0.85
CSS0518P-220N-LRH	220	22	10	290	0.80
CSS0518P-270N-LRH	270	27	10	330	0.75
CSS0518P-330N-LRH	330	33	10	385	0.65
CSS0518P-390N-LRH	390	39	10	520	0.57
CSS0518P-470N-LRH	470	47	10	595	0.54
CSS0518P-560N-LRH	560	56	10	665	0.50
CSS0518P-680N-LRH	680	68	10	840	0.43
CSS0518P-820N-LRH	820	82	10	978	0.41
CSS0518P-101N-LRH	101	100	10	1200	0.36

TEST INSTRUMENT: HP4284A 、 ZENTECH502BC / Chroma3302,1320

- 1.Tolerance : N:±30%
2. Operating temperature range: -25°C to +125°C.
3. Storage temperature range:-25°C to +85°C.
- 4.Inductance measured using the HP4284A LCR meter, CHROMA 1320 & 3302 & 16502.
- 5.DCR measured using the 502BC milli-ohm meter.
- 6.Inductance drops no more than 35% of initial value at rated current, temperature rises  $\Delta t < 40^{\circ}\text{C}$ .
- 7.MSL : LEVEL 1